



Passage

PANAMA

www.passagepanama.com



Facing the Pacific Ocean.



POINTS OF INTEREST / PUNTOS DE INTERÉS

-  Financial sector
Sector financiero
-  Museums & Historical Buildings
Museos y Centros Culturales
-  Green areas & parks
Áreas verdes y parques
-  Bikeway & running track
Ciclovía
-  Diverse gastronomy
Gastronomía variada
-  Yacht Club & Marina
Club de Yates
-  America's Bridge access
Acceso al puente de las Américas
-  Internation Airports
Aeropuertos Internacionales
-  ATM Machines
Cajeros automáticos
-  Football Stadium, Parks for Sports
Centros deportivos
-  Hotels
Hoteles

Futura conexión vial
Cinta Costera 3-Ave. Amador

Avenida Amador

Hacia la calzada de Amador

Cerro Sosa

Centro histórico
Casco Viejo

Cinta Costera

Puente de las Américas

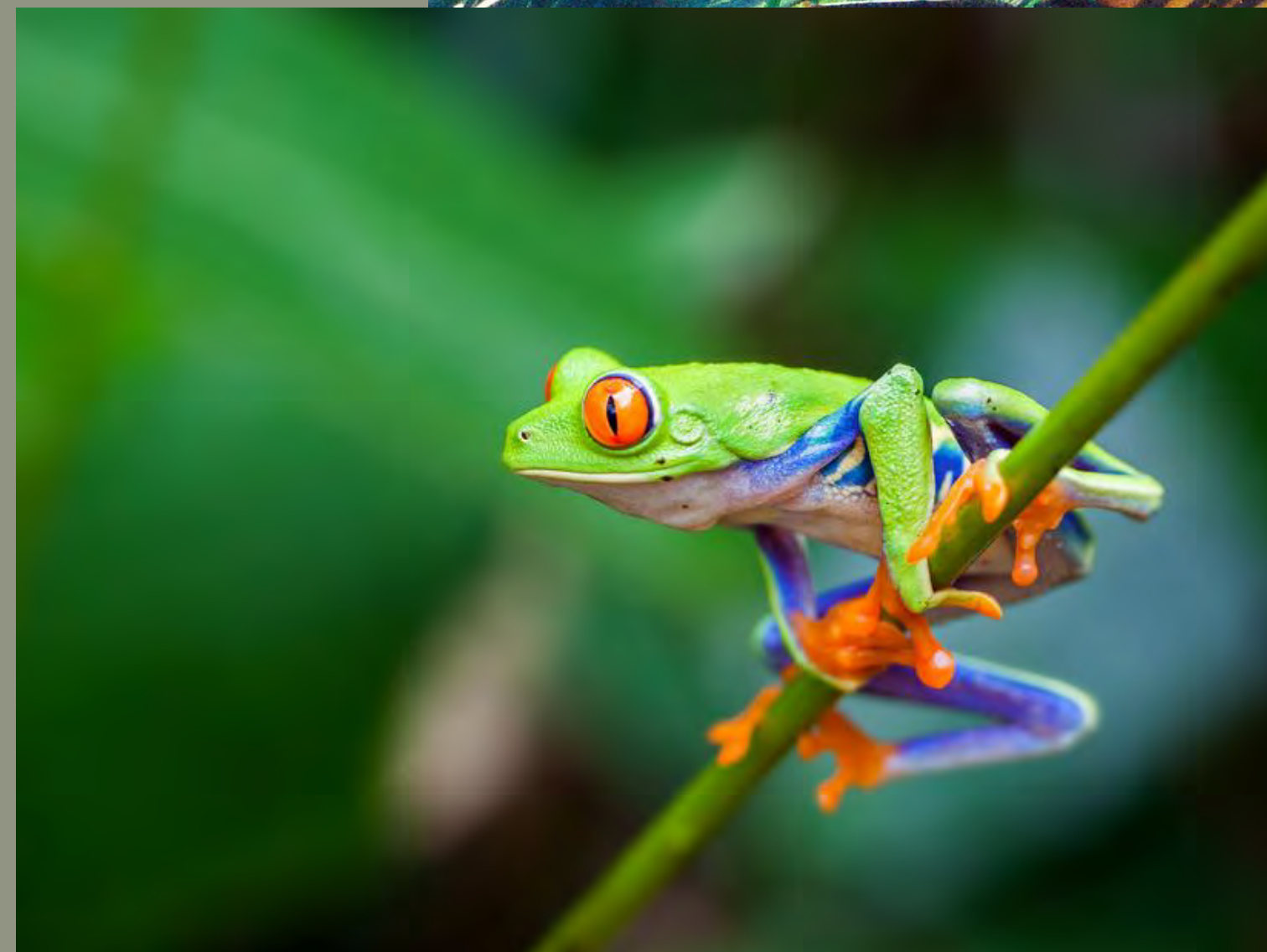
Passage

Panamá Oeste

Natural beauty

Panama is home to a number of species due to its privileged location and its tropical climate.

We are gifted with having a wide range of rainforests, a desert, and breathtaking beaches on both coastlines, the Caribbean and the Pacific, all within driving distance of a cosmopolitan city.



Passage

PANAMA

A unique place in the center of the world,
at the Pacific entrance to the Panama Canal.



Nature and engineering become a beautiful story in the tropics.

ELETA










AW Arosemena & Way
Architects / Urbanists

OPERA~~A~~

LAAP
ARQUITECTURA Y PAISAJE

A pleasant lifestyle close to nature

-  Tennis Court
-  Children's Park
-  Landscape gardens
-  Club House
-  Infinity pool
-  Fitness center
-  Shops



With resort-style
club house facilities





BBQ Areas







Restaurants, Gym and Convenience Stores



Connect with Nature everywhere



Landscape gardens



Tower 1

Tower 2



Nature and engineering
become a beautiful story in
the tropics.



TOWER 1

10 APARTMENTS PER FLOOR | FLOORS 100 TO 800



● **Family A**
97.38 m² | 2 Beds

● **Family B**
101.40 m² | 2 Beds

● **Family C**
96.77 m² | 2 Beds

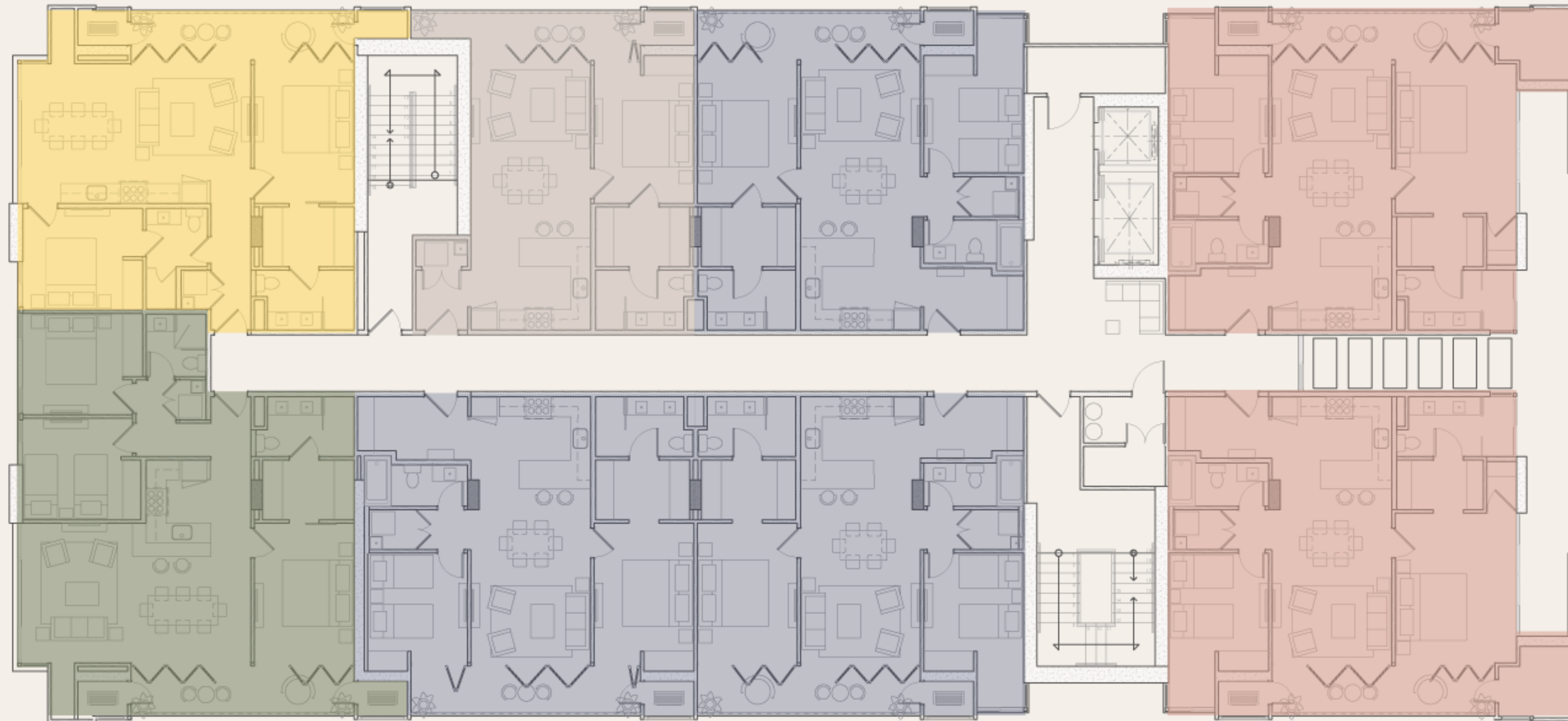
● **Family Plus**
110.86 m² | 3 Beds

● **Single**
73.14 m² | 1 Bed



TOWER 2

8 APARTMENTS PER FLOOR | FLOORS 100 TO 800



- Family A**
96.64 m² | 2 Beds
- Family B**
107.88 m² | 2 Beds
- Family C**
96.34 m² | 2 Beds
- Family Plus**
115.20 m² | 3 Beds
- Single**
73.14 m² | 1 Bed

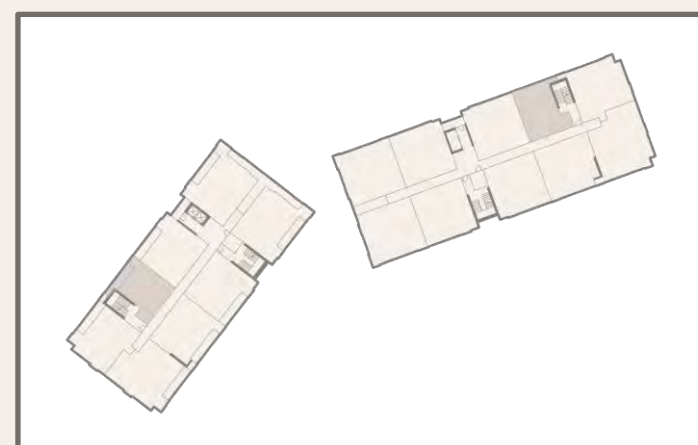




SINGLE ● 73.14 M2

Intimate surrounded by nature but steps closer to the energetic city life.

- 1 bedroom
- 1 bathroom
- Large Walk in Closet
- Kitchen, living room, dining room and laundry area.
- Large balcony







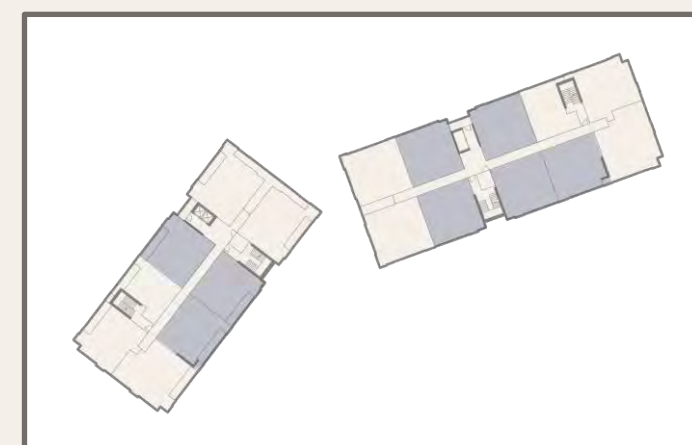




FAMILY A 97.38 M2

Where adventure starts to set a new stage of your life. Grow within the tranquility of the forests and the relaxing views to the canal.

- 2 bedrooms
- 2 bathrooms
- Large Walk in Closet
- Home Office Area
- Desk area in second bedroom
- Kitchen, living room, dining room and laundry area
- Large balcony



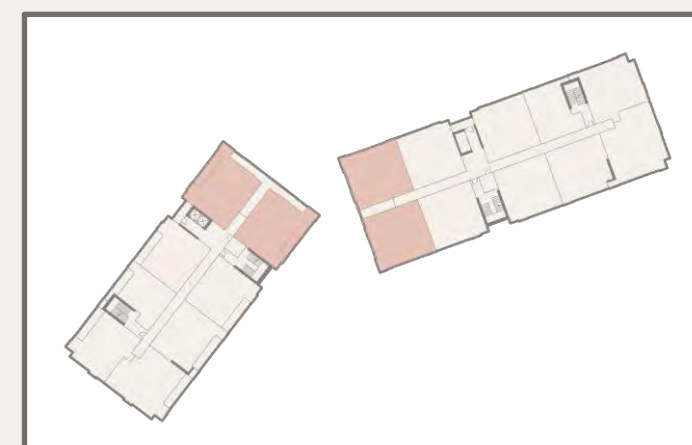




FAMILY B 107.88 M2

Where adventure starts to set a new stage of your life. Grow within the tranquility of the forests and the relaxing views to the canal.

- 2 bedrooms
- 2 bathrooms
- Large Walk in Closet
- Home Office Area
- Desk area in second bedroom
- Kitchen, living room, dining room and laundry area
- Large balcony

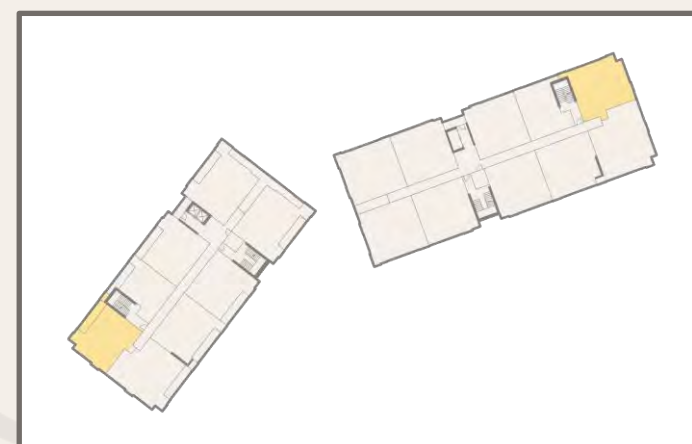




FAMILY C 96.77 M2

Where adventure starts to set a new stage of your life. Grow within the tranquility of the forests and the relaxing views to the canal.

- 2 bedrooms
- 2 bathrooms
- Large Walk in Closet
- Large living room and dining area
- Kitchen and laundry area
- Large balcony
- Located in Corner







FAMILY + 115.20 M2

Have your own space but rejoice of the company of your loved ones.

- 3 bedrooms
- 2 bathrooms
- Large Walk in Closet
- Large living room and dining area
- Kitchen and laundry area
- Large balcony
- Located in Corner











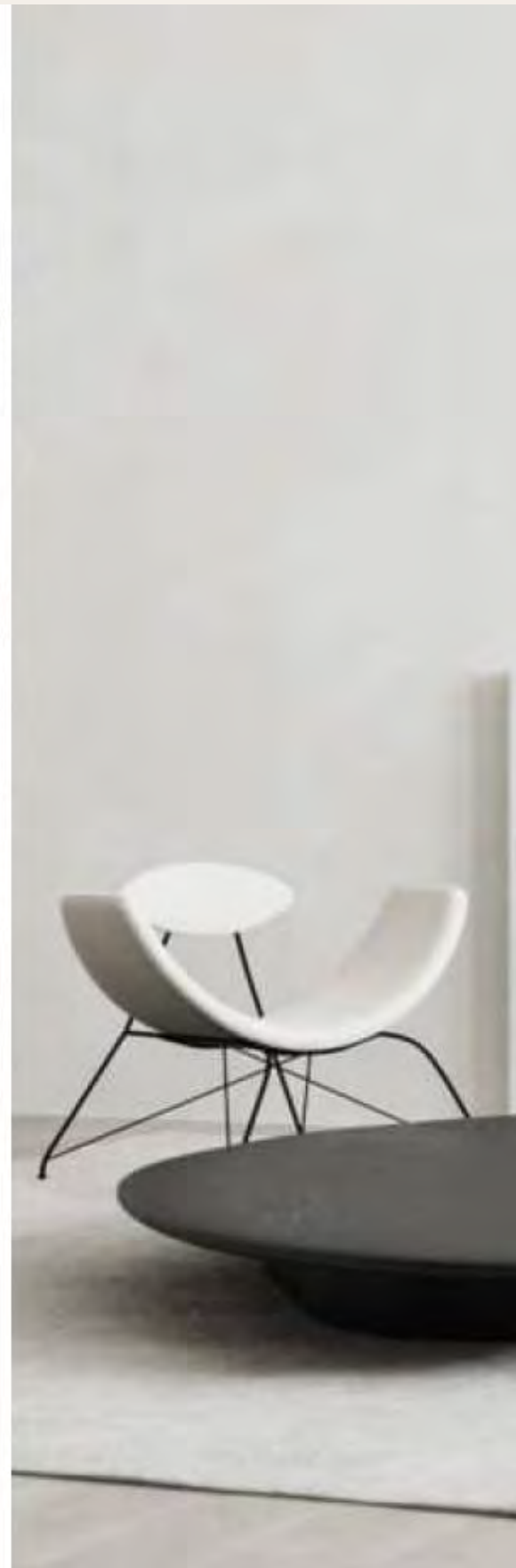




Be unique and accomodate your home in the light of the city life of the charm of living in the tropics



Cosmo



Tropical





Cosmo



Tropical





Edgardo Della Sera

edellasera@passagepanama.com
+507 6978 1812

Passage

PANAMA

www.passagepanama.com

Note: This is a draft presentation of Passage Panama which is subject to changes in design, renders and floorplans.