

# CELESTE



MODERN LIVING, NATURAL BALANCE

A place where exclusivity  
embraces family





# Valor Development

At Valor Development, we redefine the concept of real estate development in Panama by creating spaces designed for the well-being and future of every family. Since our beginnings in 2012, we were founded on the belief that family living deserves more—an experience that goes beyond the simple act of purchasing a property.

We are driven by a passion for building homes that not only reflect quality, but also become part of our clients' lives and legacy. Our approach is centered on the concept of the "family-client," where every interaction and project is carefully crafted to meet the aspirations, needs, and unique lifestyles of those who trust us. We are more than a real estate developer—we are partners in the journey toward a future full of opportunities, where the investment is not only financial, but also emotional and personal.



Images and floor plans are architectural representations of the project and may be subject to change without prior notice.



Images and floor plans are architectural representations of the project and may be subject to change without prior notice.

Celeste	5
Location	8
Amenities	11
Quality & Finishes	19
Architectural Design	23
Floor Plants	28



# Celeste

## *Unparalleled sophistication in Panama City*

Celeste is a residential tower within the prestigious Santa María community, located in the heart of Panama City.

With distinctive features, an efficient design, and a commitment to the highest aesthetic standards, this development is set to become a symbol of well-being and excellence across the region.



Images and floor plans are architectural representations of the project and may be subject to change without prior notice.

42 LEVELS

---

3 BEDROOMS

---

SPACIOUS APARTMENTS FROM 190 TO 249 M<sup>2</sup>

---

3.5 BATHROOMS

---

LIVING ROOM

BALCONY

---

STAFF BEDROOM WITH BATHROOM

---

2 PENTHOUSES

---

2/3 PARKING SPACES PER APARTMENT

---

*The best of the city and nature,  
right from your window*





# Santa María

Celeste is located on the edge of the prestigious Santa María residential community in Panama City.

This privileged location offers a peaceful, nature-filled setting, just steps away from the vibrant Costa del Este district.

Within and around the community, residents can enjoy a wide range of world-class services and amenities:

*/ Business Center*

*/ Restaurants*

*/ Boutiques*

*/ Hospitals*

*/ Golf Course*

*/ Pharmacy*

*/ Schools*

*/ Supermarkets*

*/ Sports Club*

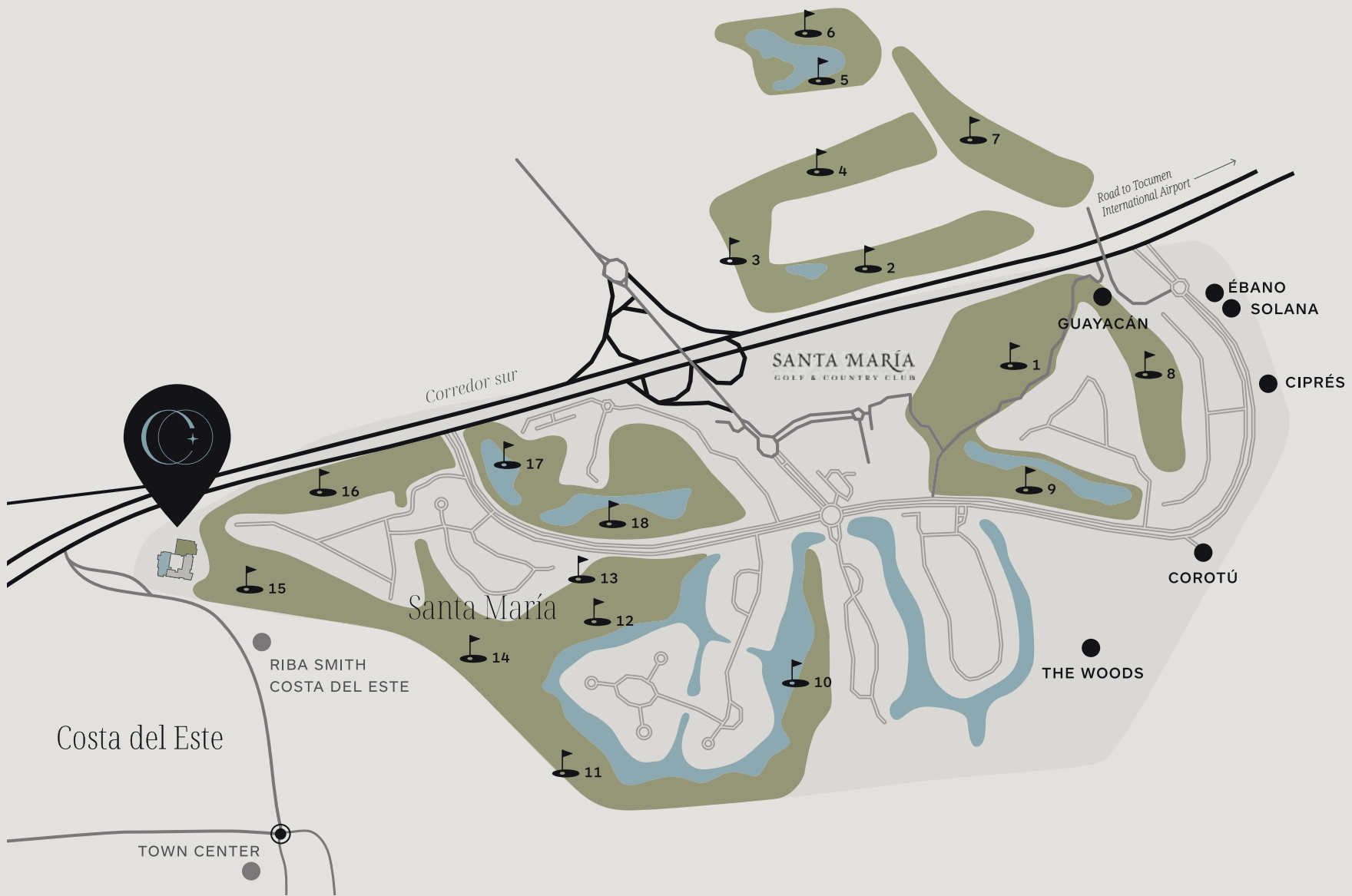
*/ Airport*

*/ Hotel*



One of Celeste's greatest advantages is its setting, surrounded by the Santa María Golf Club, designed by Nicklaus Design—the world-renowned firm founded by golf legend Jack William Nicklaus.

The 18-hole course spans an impressive 284 hectares, offering an unparalleled experience for players of all levels.



*Between nature and modernity*

# Amenities

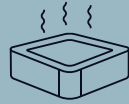
*A lifetime of unforgettable moments, an unparalleled way of living*

Celeste stands out for its exceptional amenities, making it an unparalleled residential tower in the area. Here, you'll find a variety of social spaces and thoughtfully designed areas to meet every need of you and your family.

From recreational areas to dedicated spaces for work and study, living at Celeste means enjoying access to an exclusive club every day—without ever leaving home.



TEENS LOUNGE



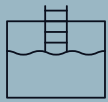
JACUZZI



GYM



KIDDIE POOL



LAP POOL



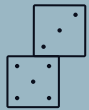
SPLASH PARK



WINE BAR



ZEN GARDEN & YOGA DECK



TEEN'S LOUNGE



COWORKING



GOURMET ROOM



SKY LOUNGE



PADDLE COURT



KIDS PLAYROOM



All images and floor plans are artistic representations of the project and are subject to change without prior notice.

SPLASH PARK

*Endless benefits from  
the privacy of your home*



All images and floor plans are artistic representations of the project and are subject to change without prior notice.



*A special place  
for wine lovers*

All images and floor plans are artistic representations of the project and are subject to change without prior notice.

WINE BAR /  
PRIVATE WINE  
CELLAR

*A sublime design*



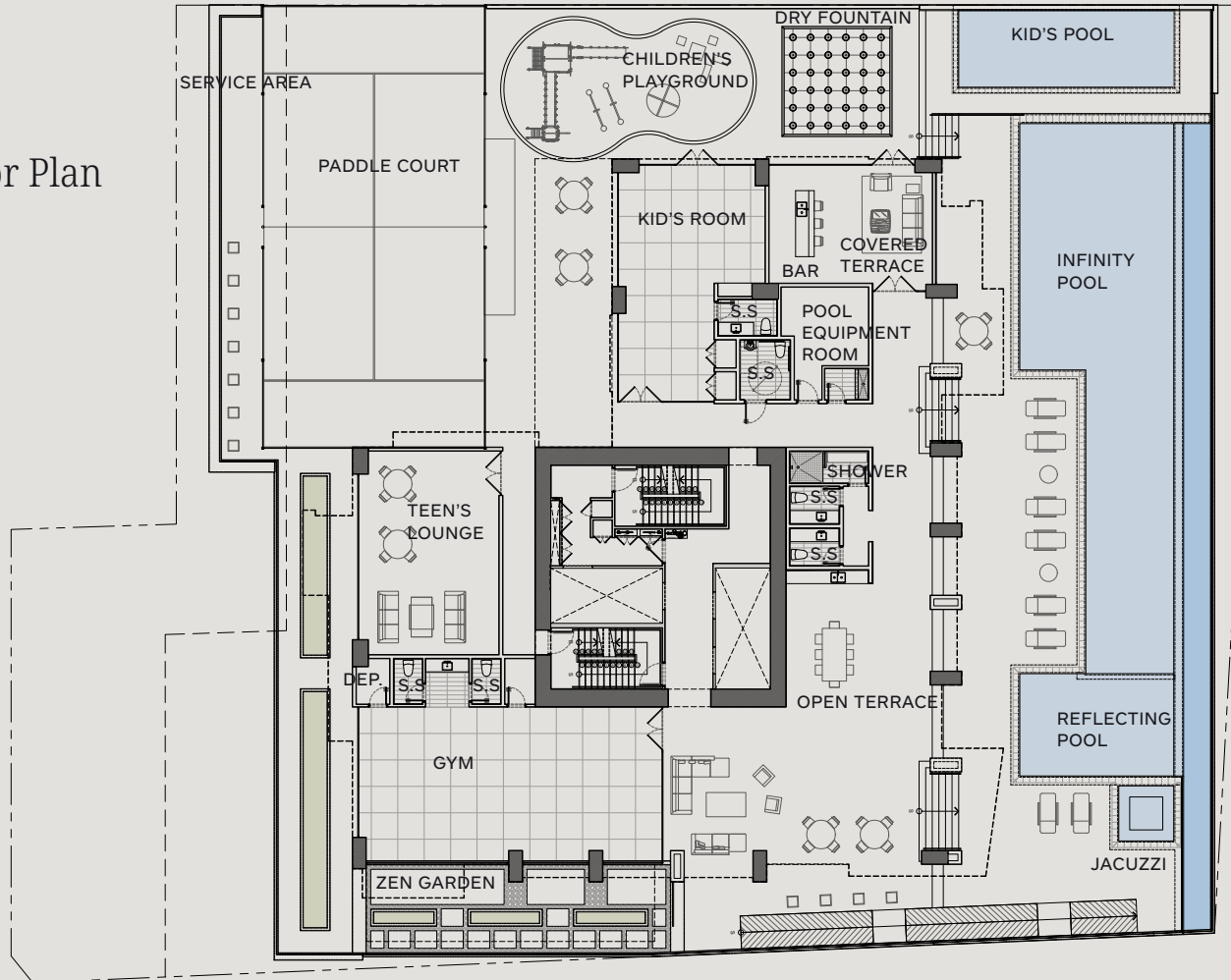
All images and floor plans are artistic representations of the project and are subject to change without prior notice.

We strive to create an environment that fosters community connection, unforgettable moments, and lasting relationships. Every corner of our amenities has been thoughtfully designed to ensure that each member of your family finds their own special place.

Our facilities are crafted to suit a wide range of needs and lifestyles, offering a welcoming and versatile environment.

# Social Areas Floor Plan

LEVEL 6





# Quality & Finishes

*Every space,  
a tribute to life*

Cada rincón, detalle y acabado está pensado para brindar confort y bienestar a cada integrante de la familia. Anhelamos que en Celeste encuentres ese hogar para toda la vida, donde los materiales resistan el paso del tiempo y la distribución de los espacios celebre tu manera de vivir.



LAMINATED  
WINDOWS

GYPSUM WORK &  
AIR CONDITIONING DUCTS

MARBLE FLOORS

IMPORTED CARPENTRY

All images and floor plans are artistic representations of the project and are subject to change without prior notice.

INCLUDES  
APPLIANCES

SINTERED STONE COUNTERTOPS

ITALIAN  
KITCHEN

All images and floor plans are artistic representations of the project and are subject to change without prior notice.

*A space designed  
for refined living*



KOHLER FIXTURES

RAIN SHOWER

MARBLE-CLAD  
WALLS

KOHLER FITTINGS

SINTERED STONE  
COUNTERTOPS

All images and floor plans are artistic representations of the project and are subject to change without prior notice.

*Celeste, where you'll find a home  
for a lifetime*

# Architectural Design

At Celeste, we offer an elevated quality of life through thoughtfully designed layouts and unparalleled views that will accompany you for years to come.

Our goal is to provide you with a home where every corner is crafted for your comfort, and where the beauty of the surroundings seamlessly integrates into your daily life—creating





All images and floor plans are artistic representations of the project and are subject to change without prior notice.

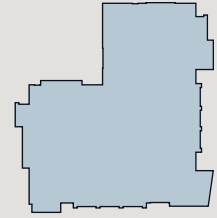




All images and floor plans are artistic representations of the project and are subject to change without prior notice.



# Typical Floor Plan



# Type A / TOTAL AREA 249 m<sup>2</sup>

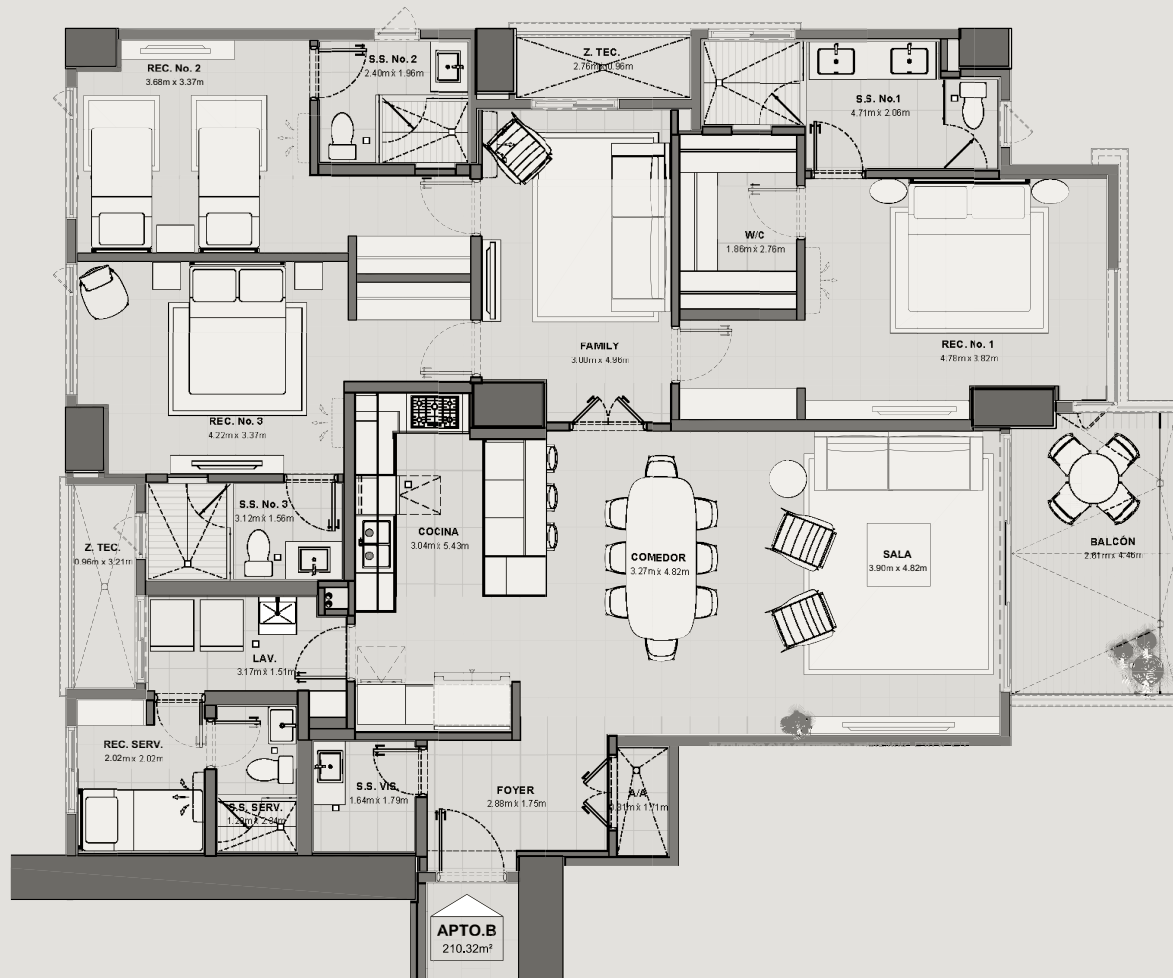


*Golf Course View*

*Vista a Costa del Este*

# Type B /

TOTAL AREA  
210 m<sup>2</sup>



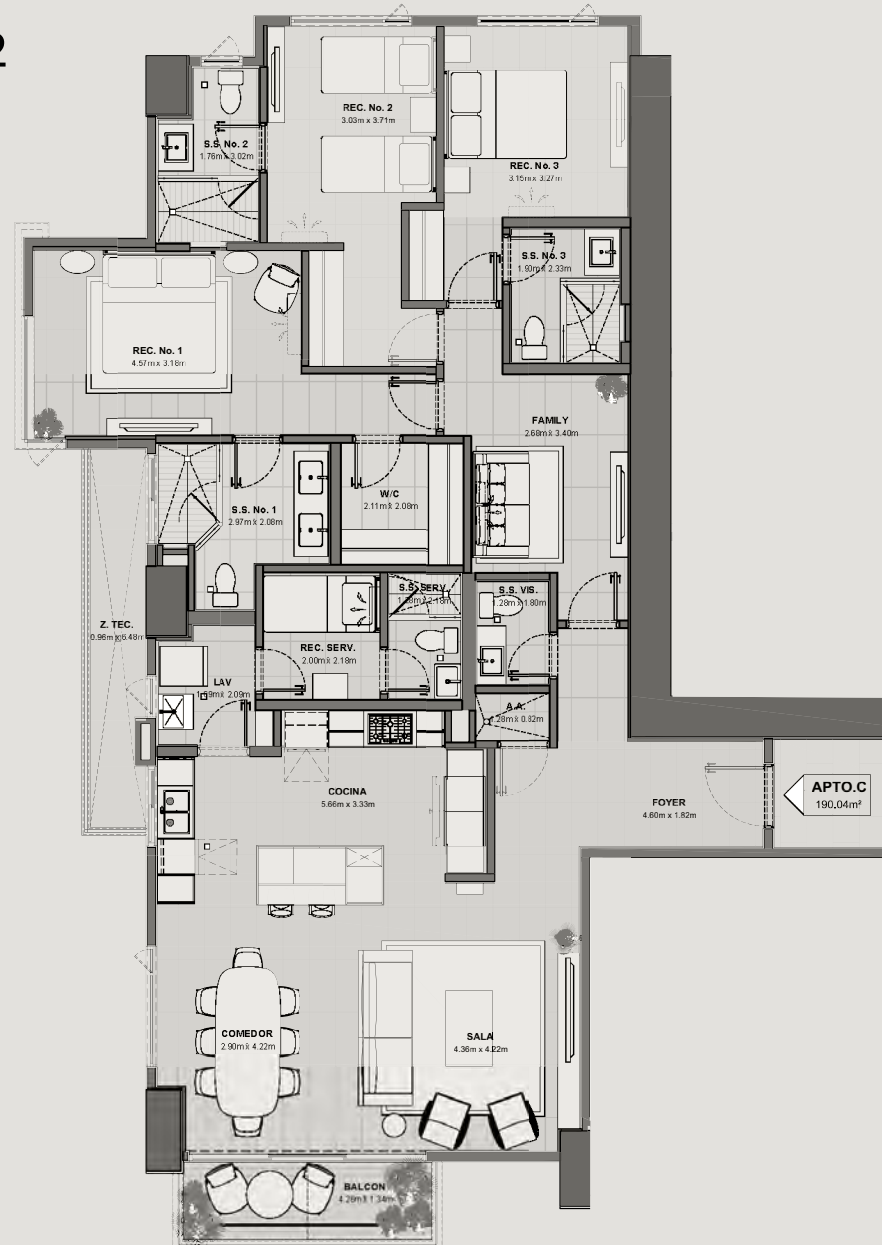
*Golf Course View*

**APTO. B**

210.32m<sup>2</sup>

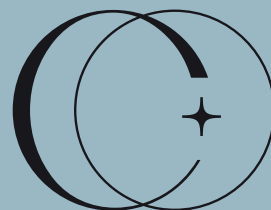
# Type C /

ÁREA TOTAL  
190 m<sup>2</sup>





AERIAL VIEW  
SANTA MARÍA GOLF CLUB  
*Santa María, Panama.*



MODERN LIVING, NATURAL BALANCE

Santa María • Panamá

WEB |  
[CELESTESANTAMARIA.COM](http://CELESTESANTAMARIA.COM)

MAIL |  
[RUDY@SELECTPANAMAREALESTATE.COM](mailto:RUDY@SELECTPANAMAREALESTATE.COM)

TEL |  
+507 6090.3223

